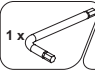

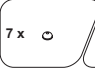
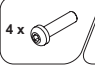

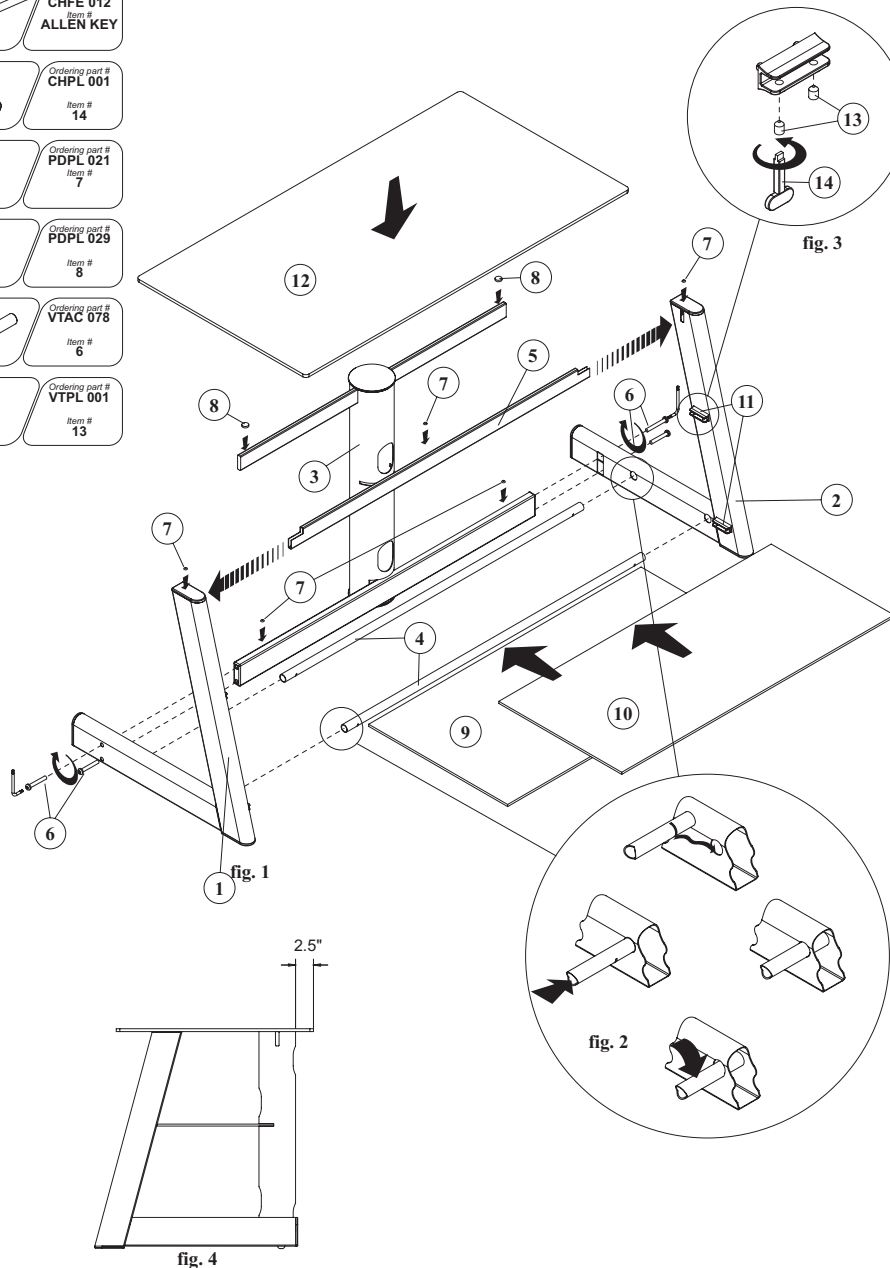


AVS 422

ASSEMBLY INSTRUCTIONS

- 1 x  Ordering part # **CHFE 012**
Item # **ALLEN KEY**
- 1 x  Ordering part # **CHPL 001**
Item # **14**
- 7 x  Ordering part # **PDPL 021**
Item # **7**
- 2 x  Ordering part # **PDPL 029**
Item # **8**
- 4 x  Ordering part # **VTAC 078**
Item # **6**
- 8 x  Ordering part # **VTPL 001**
Item # **13**



NOTE: Two people are recommended to assemble this unit.

A. PLACE the rear CMS (Cable Management System) post (3) upright on the floor with the shelf slot facing towards the front as shown in fig. 1.

B. ALIGN the two holes located on the CMS post lower rear support bar end with the matching holes located towards the rear on the bottom of the left side frame (1). INSERT two screws (6) and SECURE the side frame (1) to the CMS post bar (3) using the supplied Allen wrench, as shown in fig. 1. DO NOT FULLY TIGHTEN THE SCREWS.

C. INSERT the two round bottom shelf support bars (4) into the holes on the left side frame (1) making sure that the cut out slots on either end of the support bars (4) are facing DOWNWARDS. PUSH downward on the bars until the slot snaps into the side frame as shown in fig. 2. INSERT the upper front support bar (5) into the cut out slots located on top of the side frame so that the notches at each end of the bar are facing up as shown in fig. 1.

D. REPEAT steps B and C above for the right side frame (2) making sure that the right side of the support bars (4) are securely snapped into place. DO NOT FULLY TIGHTEN THE SCREWS.

E. PLACE the small glass pads (7) onto the lower rear glass support bar of the CMS post (3), upper front support bar (5) and top of the side frames (1) and (2). PLACE the larger and taller glass pads (8) onto the upper rear glass support bar of the CMS post (3).

F. MOVE the assembled stand into the position it will occupy in the room PRIOR to adding the glass shelves, TV, or other equipment.

G. CAREFULLY PLACE the bottom (middle sized) shelf (9) into position so that the shelf rear slides into the cut-out slot on the CMS post (3), and secure tightly into the glass shelf clips (11) using the supplied set screws (13) and plastic screwdriver (14) as shown in fig. 3. NOTE: It won't be possible to place the glass shelves into position unless the support bars (4) are securely snapped into place.

H. CAREFULLY PLACE the center (smallest sized) shelf (10) into position so that the shelf rear slides into the cut-out slot on the CMS post (3), and secure tightly into the glass shelf clips (11) using the supplied set screws (13) and plastic screwdriver (14) as shown in fig. 3.

I. GO BACK AND TIGHTEN the screws to secure the side frames (1) and (2) and the CMS post bar (3) using the supplied Allen wrench.

J. CAREFULLY PLACE the top (largest sized) shelf (12) into position so that the shelf rear rests on the rear support bar and top of the CMS post (3). NOTE: It is recommended that the top extends out exactly 2.5" from the end of CMS post (3), as shown in fig. 4.

IMPORTANT: REMOVE ALL GLASS, TV AND OTHER EQUIPMENT FROM THE STAND PRIOR TO MOVING THE ASSEMBLED UNIT. DO NOT ATTEMPT TO MOVE THE ASSEMBLED STAND AFTER THE GLASS SHELVES HAVE BEEN INSTALLED, AND/OR WHEN THERE IS EQUIPMENT LOCATED ON THE STAND AS THIS MAY CAUSE THE SHELVES TO BECOME UNSECURE AND FALL. MAKE SURE THAT THE FRONT OF THE TV IS POSITIONED A FEW INCHES BACK FROM THE FRONT OF THE TOP GLASS. WHEN IN USE, THIS FURNITURE MUST BE PLACED ON A FLAT AND LEVEL SURFACE.

ALWAYS PLACE THE HEAVIEST EQUIPMENT ON THE BOTTOM SHELF.