

AVS 2572

ASSEMBLY INSTRUCTIONS MONTAGEANLEITUNG INSTRUCTIONS DE MONTAGE ISTRUZIONI PER IL MONTAGGIO INSTRUCCIONES PARA EL MONTAJE

Note: Two people are recommended to assemble this unit.

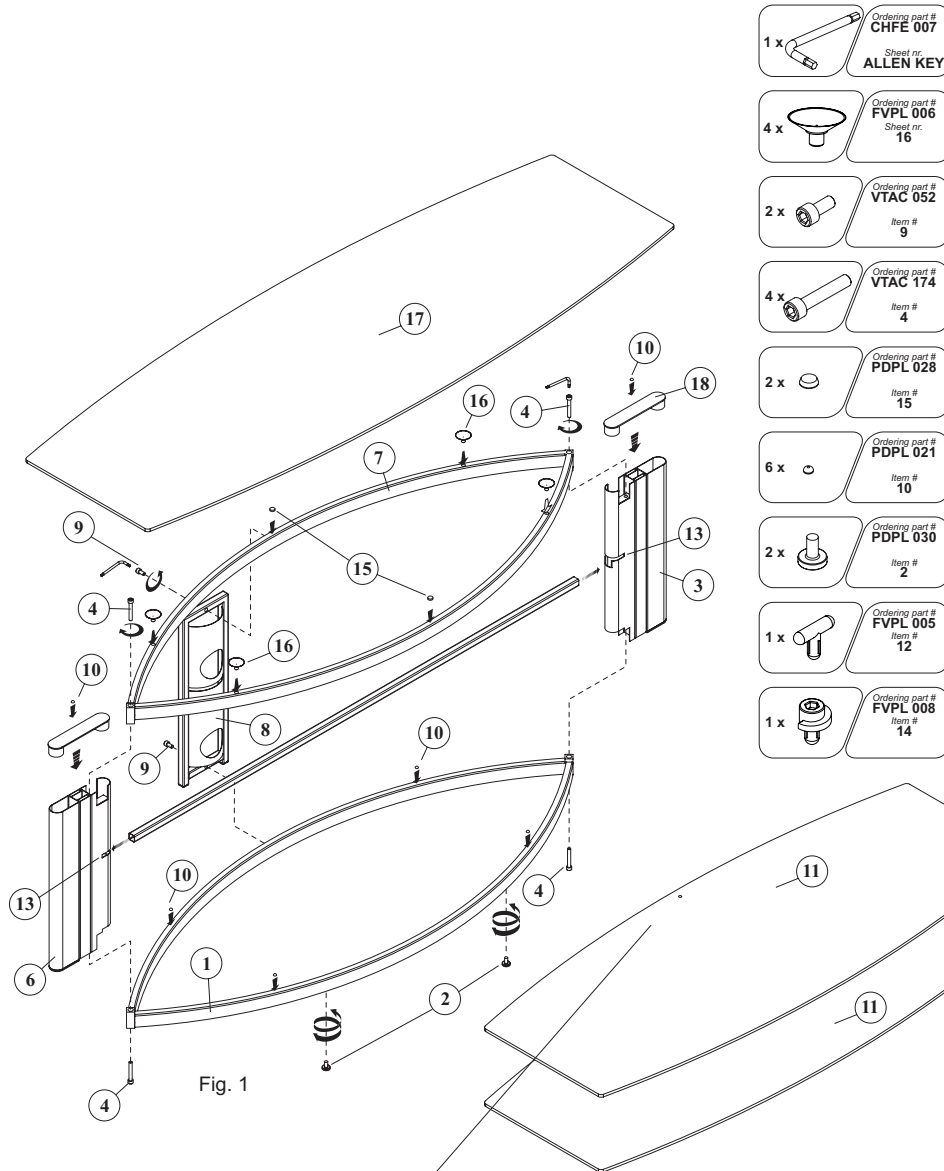


Fig. 1

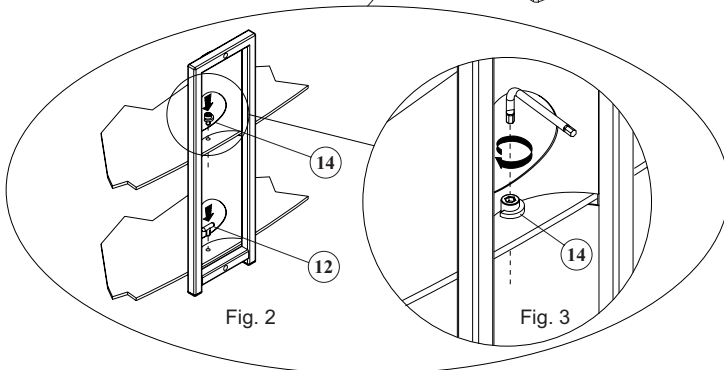
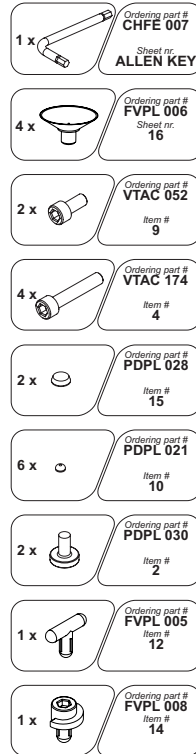


Fig. 2

Fig. 3



A. REMOVE the two oval metal frames from the carton and place the TOP frame (7), identified by the "TOP" sticker, to the side. SELECT the BOTTOM frame (1), identified by the threaded metal inserts on the bottom of the frame, and SCREW the leveling feet (2) into the threaded inserts.

B. PLACE the BOTTOM frame (1) with the leveling feet (2) on the floor facing towards the front. POSITION the RIGHT side leg (3) over the BOTTOM frame, with the Bell'O[®] logo at the top and facing forwards, and CAREFULLY tip both pieces over. SECURE them together, using one of the four long screws (4) and the supplied Allen key. Note: DO NOT FULLY TIGHTEN THE SCREW AT THIS POINT.

C. INSERT the square center shelf support bar (5) into the square cut-out located in the center of the RIGHT side leg (3). POSITION the left side leg (6) and INSERT the opposite end of the square center shelf support bar (5) into the square cut-out located in the center of the LEFT side leg (6).

D. PLACE the left leg (6) over of the BOTTOM frame (1) and SECURE the left side leg to the BOTTOM frame using one of four long screws (4) and the Allen key. Note: DO NOT FULLY TIGHTEN THE SCREW AT THIS POINT.

E. CAREFULLY tip the unit upright so that the BOTTOM frame (1) is resting on the floor. PLACE the TOP frame (7), with the four holes located in frame facing upwards, and INSERT the TOP frame into the cut-outs on the top of the side legs (3) and (6). SECURE the TOP frame to the legs using two of the four long screws (4). Note: DO NOT FULLY TIGHTEN THE SCREWS AT THIS POINT.

F. PLACE the CMS[®] (Cable Management System) post (8) upright against the rear of the frame as shown in Fig. 1., and ALIGN the top and bottom holes of the CMS[®] post with the threaded inserts located on the rear of TOP and BOTTOM frames (1) and (7). SECURE the CMS[®] to the frames using two short bolts (9) and the Allen key.

IMPORTANT: NOW GO BACK AND NOW TIGHTEN ALL SIX SCREWS FULLY.

IMPORTANT: The assembly process was designed to leave some movement in the legs prior to fully tightening all screws. Make sure that the legs are straight and aligned with the square center shelf support bar (5) before final tightening. If not, the center glass shelf may be difficult to insert.

G. CAREFULLY MOVE and POSITION the furniture to the location it will occupy in the room when fully assembled and in use.

H. INSERT the two metal leg caps (18) onto the side legs (3) and (6), and APPLY two smaller rubber glass pads (10) as shown. APPLY the four smaller rubber glass pads (10) to the upper side of the BOTTOM frame (1) as shown in Fig. 1.

I. CAREFULLY SLIDE one of the two smaller glass shelves (11) onto the BOTTOM frame (1) with the glass shelf locking pin hole inserted through the bottom slot of the CMS[®] post (8). LOCK the glass shelf in place, from the rear of the CMS[®] post, using the supplied 'T' shaped plastic shelf locking pin (12) as shown in Fig.2.

J. CAREFULLY SLIDE the second of the two smaller glass shelves (11) over the square shelf support bar (5) and through the slots (13) located on the center of the two side legs (3) and (6), so that the shelf locking pin hole is inserted through the slot of the CMS[®] post (8). LOCK the glass shelf in place by INSERTING the supplied 'ROUND' plastic pin (14) into the hole in the glass and turn until secure using the Allen key as shown in Fig.3.

K. APPLY the two larger rubber glass pads (15) to the mid-point of the front and rear of the TOP frame (7) as shown in Fig. 1. INSERT the four smaller rubber glass pads (10) into holes located on the TOP frame (7) as shown in Fig. 1.

L. CAREFULLY position and place the top glass shelf (17), the largest of the three shelves, onto the top of the assembled frame so that it is centered over the frame and legs. PRESS DOWN GENTLY to secure the top glass shelf to the furniture. NOTE: THE SUCTION CUPS WILL HELP PREVENT THE TOP GLASS FROM BEING MOVED. TO REMOVE THE TOP GLASS, GENTLY PULL THE TABS ON THE SIDE OF THE SUCTION CUPS DOWNWARD TO RELIEVE THE SUCTION.

M. If needed, ADJUST the leveling feet (2) to ensure that the furniture is resting flat on the floor.

IMPORTANT: REMOVE ALL GLASS, TV AND OTHER EQUIPMENT FROM THE FURNITURE PRIOR TO MOVING THE ASSEMBLED UNIT. DO NOT ATTEMPT TO MOVE THE ASSEMBLED FURNITURE AFTER THE GLASS SHELVES HAVE BEEN INSTALLED, AND/OR WHEN THERE IS EQUIPMENT LOCATED ON THE FURNITURE AS THIS MAY CAUSE THE SHELVES TO BECOME UNSECURE AND FALL. MAKE SURE THAT THE FRONT OF THE TV IS POSITIONED A FEW INCHES BACK FROM THE FRONT OF THE TOP GLASS. WHEN IN USE, THIS FURNITURE MUST BE PLACED ON A FLAT AND LEVEL SURFACE.

ALWAYS PLACE THE HEAVIEST EQUIPMENT ON THE BOTTOM SHELF.